



MONTHLY MEMBERSHIP PROGRESS REPORT

District 49 A

Results as of: 4/30/2016

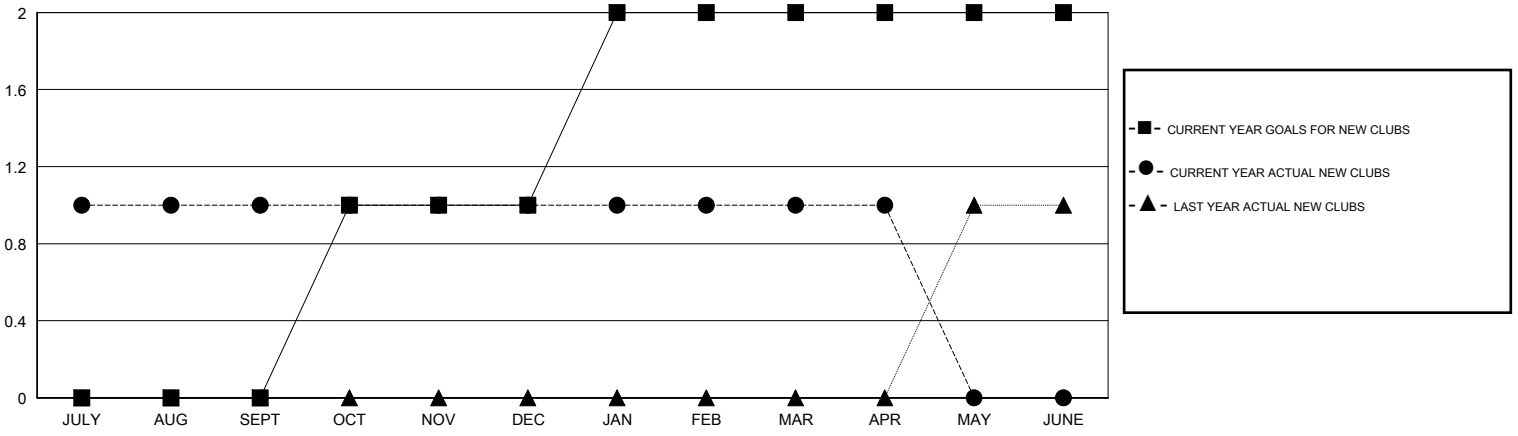
GMT: Gary Wong

LOCATION ALASKA

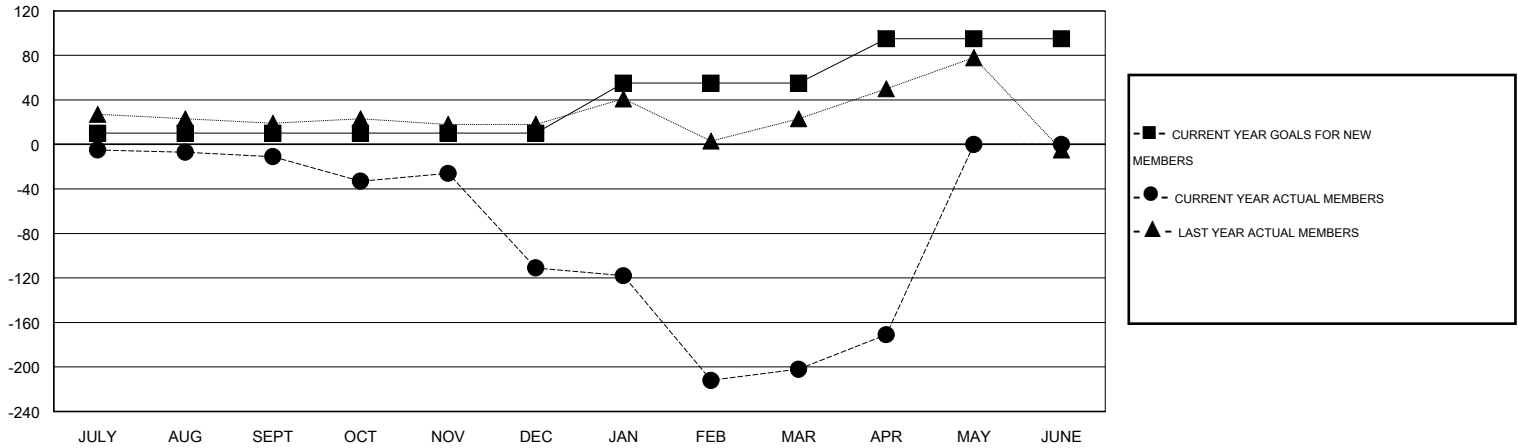
GMT CA 1

| Clubs | | | | | Members | | | | |
|-----------------------|---------------|-----------|---------------|---------------|-----------------------|-----------------|-------------------------------|-----------------|---------------|
| RESULTS FOR 2015-2016 | | | | | RESULTS FOR 2015-2016 | | | | |
| QUARTER | NEW CLUB GOAL | NEW CLUBS | DROPPED CLUBS | NET GAIN/LOSS | QUARTER | NEW MEMBER GOAL | CHARTER AND NEW MEMBERS ADDED | DROPPED MEMBERS | NET GAIN/LOSS |
| JULY/AUG/SEPT | 0 | 1 | 0 | 1 | JULY/AUG/SEPT | 10 | 74 | 85 | -11 |
| OCT/NOV/DEC | 1 | 0 | 0 | 0 | OCT/NOV/DEC | 0 | 33 | 133 | -100 |
| JAN/FEB/MAR | 1 | 0 | 0 | 0 | JAN/FEB/MAR | 45 | 62 | 153 | -91 |
| APR/MAY/JUNE | 0 | 0 | 0 | 0 | APR/MAY/JUNE | 40 | 46 | 15 | 31 |

GOALS AND ACTUAL NEW CLUBS CUMULATIVE



GOALS AND ACTUAL MEMBERS CUMULATIVE



| | | | |
|------------------------|--|----------------------------------|--------------|
| DROPPED CLUBS: 0 | 27 CLUBS OF 40 ADDED 1 OR MORE NEW MEMBERS | <u>GENDER DISTRIBUTION</u> | |
| <u>DROPPED MEMBERS</u> | | MALE | 822 (55.88%) |
| DECEASED | 6 | FEMALE | 649 (44.12%) |
| CLUB CANCELLED | 0 | <u>FAMILY UNIT MEMBERS</u> 364 | |
| OTHER | 380 | <u>HEAD OF HOUSEHOLD</u> 176 | |
| TOTAL | 386 | <u>NON-HEAD OF HOUSEHOLD</u> 188 | |

[CLICK HERE FOR HEALTH ASSESSMENT DATA](#)